

[Total No. of Questions - 6] [Total No. of Printed Pages - 3]
(2123)

1329

B. Tech 3rd Semester Examination

Machine Drawing (N.S.)

ME-213

Time : 3 Hours

Max. Marks : 100

The candidates shall limit their answers precisely within the answer-book (40 pages) issued to them and no supplementary/continuation sheet will be issued.

Note : Attempt three questions in all, selecting one question from each sections A, B and C.

SECTION - A

1. Sketch (a) sectional view from the front and (b) view from the side of a bevel gearing. Indicate the required parameters. **(20)**
2. Define the following terms: (a) Datum (b) Datum feature (c) Datum Triangle (d) Datum letter with the half of sketch, show how geometrical tolerances are indicated on a drawing. **(20)**

SECTION - B

3. Sketch the sectional view from the front and view from the side of a muff coupling, indicating proportions for connecting two shafts each of diameter 30 mm. **(20)**
4. What are the advantages of welding over riveting? Sketch the following welding symbol along with the respective illustrations:
(a) Single V-butt weld (b) Single bevel butt weld (c) Single U-butt weld (d) single J-butt joint (e) Fillet weld (f) Butt resistance (g) bead (h) stud. **(20)**

1329/2000

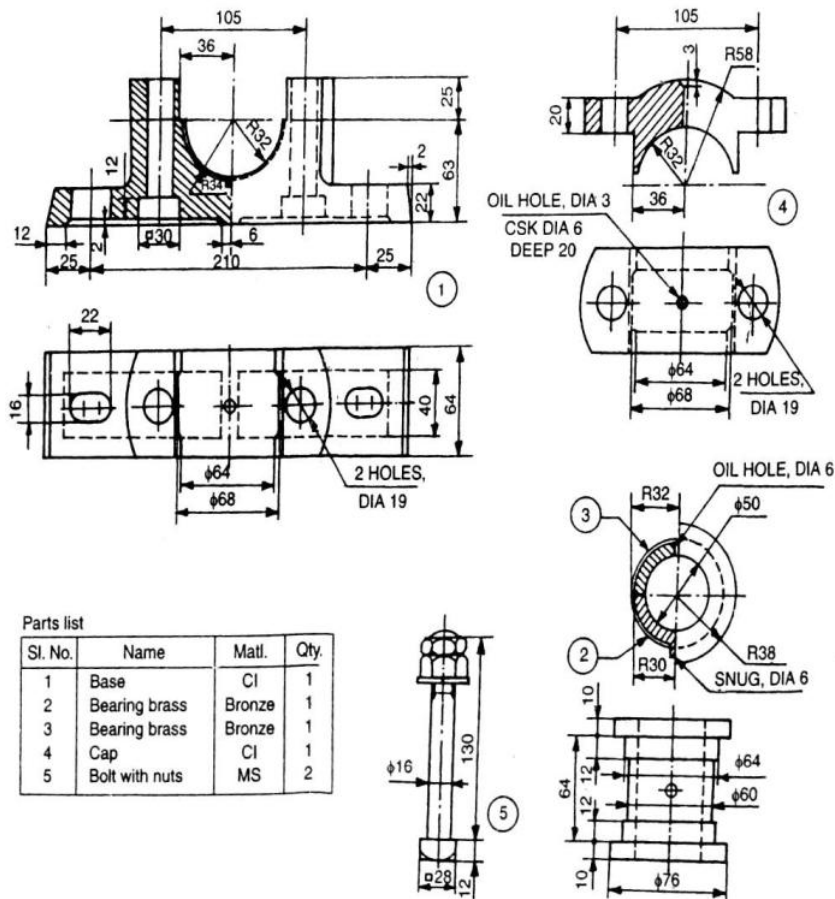
[P.T.O.]

SECTION - C

5. Assemble the parts of the Plummer Block shown in Fig. 1, and draw.

(i) Half section view from the front, with left half in section. (35)

(ii) View from above. (25)



Parts list

Sl. No.	Name	Matl.	Qty.
1	Base	CI	1
2	Bearing brass	Bronze	1
3	Bearing brass	Bronze	1
4	Cap	CI	1
5	Bolt with nuts	MS	2

Fig. 1 : Plummer block

6. Assemble the parts of the Machine-Vice shown in Fig. 2, and using suitable scale draw.

(i) Sectional view from the front. (35)

(ii) View from the above. (25)

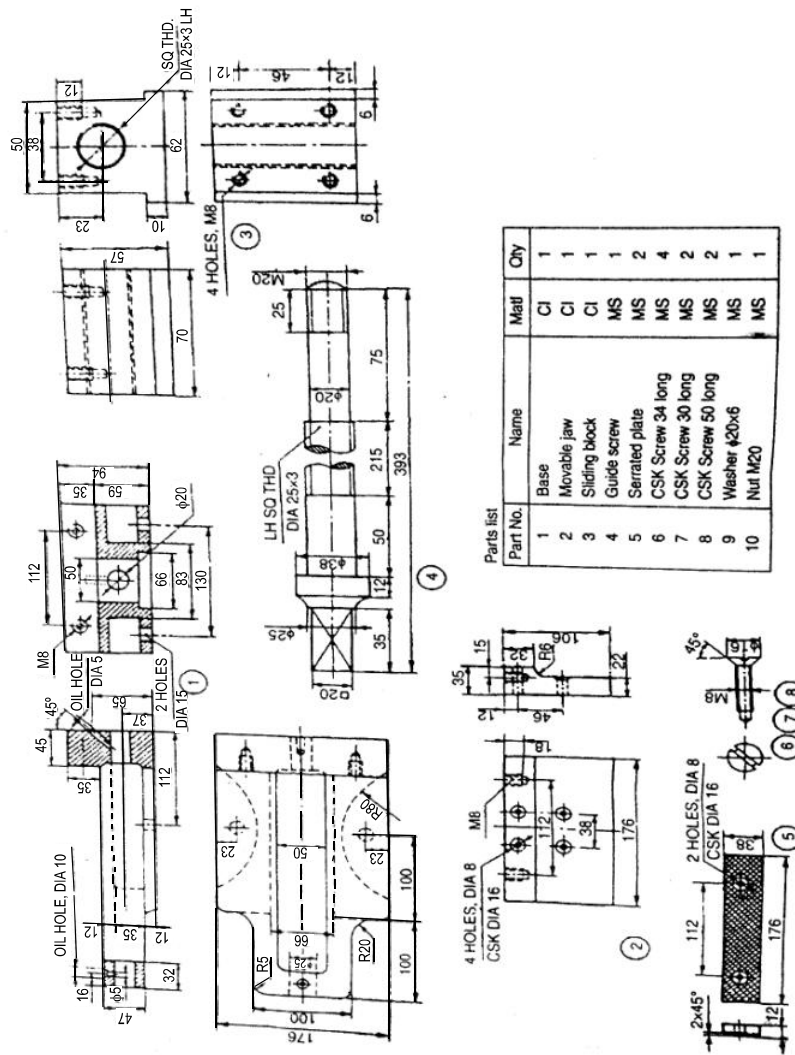


Fig. 2 : Machine vice