

16037(D)

- 0 DEC 2016

B. Tech 3rd Semester Examination

Machine Drawing (NS)

ME-213

Time : 3 Hours

Max. Marks : 100

The candidates shall limit their answers precisely within the answer-book (40 pages) issued to them and no supplementary/continuation sheet will be issued.

Note : Attempt three questions in all, selecting one question each from section A, B and C.

SECTION - A

- Sketch a figure illustrating the following terms as per BIS.
 - Basic size and Basic line.
 - Upper and Lower deviation. (20)
- Sketch two views of a worm gearing indicating the necessary parameters. (20)

SECTION - B

- Sketch a piston showing the position of gudgeon pin, piston rings, connecting rod etc., on it. (20)
- Sketch two views of a single rivetted butt joint with two cover plates for 9mm thick plates. (20)

SECTION - C

- Detailed drawings of a Tool Post is given in Fig. 1. Draw.

- Sectional Front view at 'xx'.
- Right side view. (60)

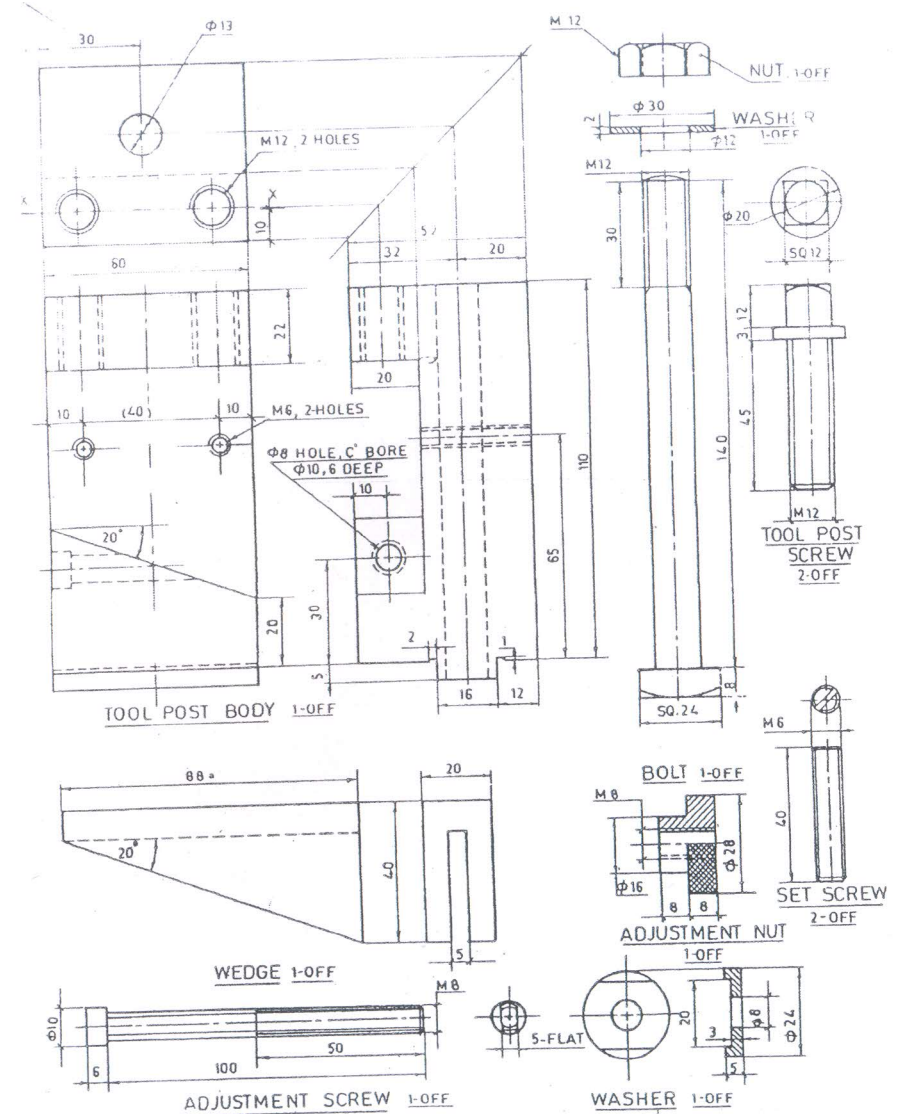


Fig. 1. (Q. No. 5)

6. From the details of the stuffing box drawings given in Fig. 2.
 Draw the following:
- (a) Front view left half in section.
 - (b) Top view.
- (60)

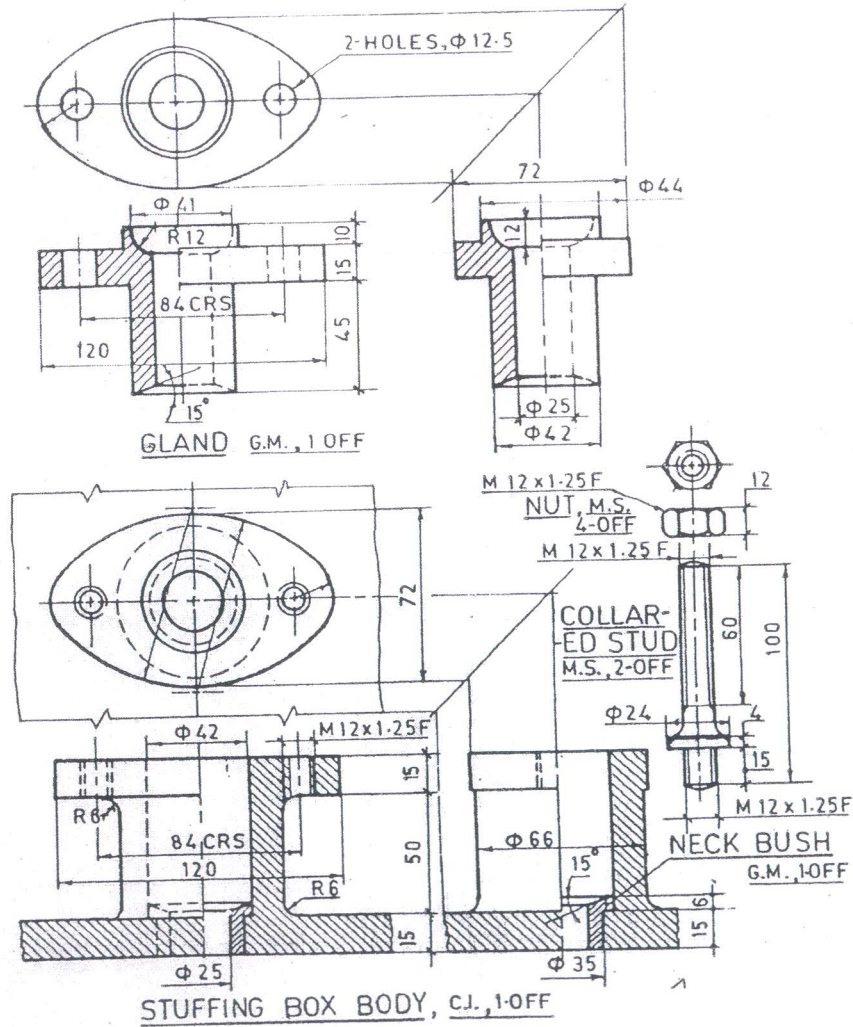


Fig. 2. (Q. No. 6)